



Higher Safety

High safety standard LFP battery
DC minimum in parallel technology
improves system safety



Lower LCOE

Full life-cycle quality guarantee
Liquid cooling technology to
reduce battery degradation



More Flexible

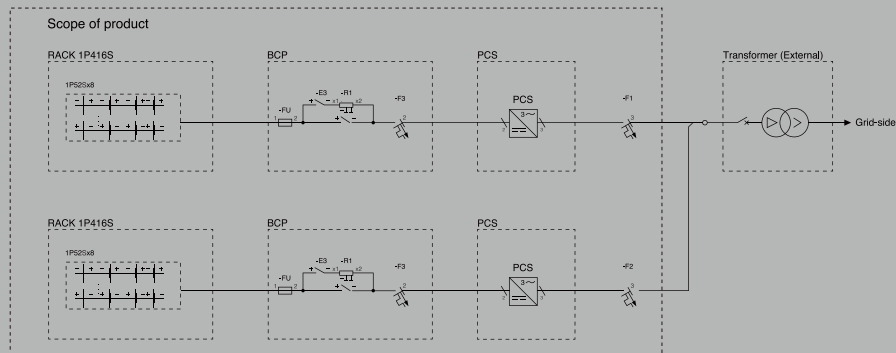
Completely modular design for
kW to GW application
Customized solutions



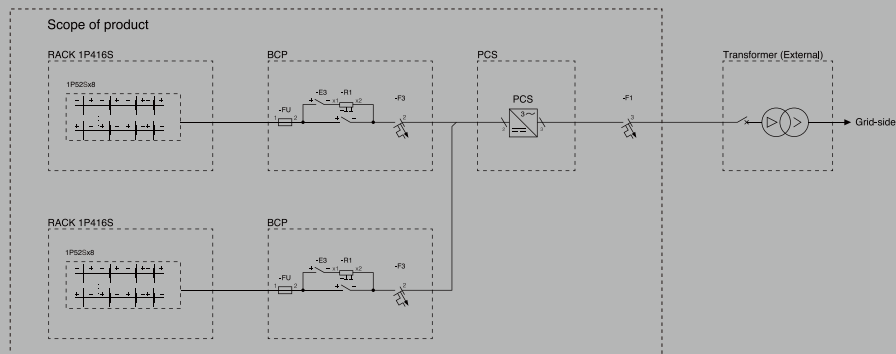
Grid Forming

Grid forming BESS for
weak grid/micro-grid/off-grid
VRE & IBR penetration expert

GoldBlock L800Pro(2h)



GoldBlock L800ProQ(4h)



GoldBlock L800 Proz is the BESS without internal PCS inverter
Reserves the right to make changes to the products and information
contained in this document without notice.



GOLDWIND SCIENCE & TECHNOLOGY CO., LTD.

www.goldwind.com
Corporate_Comms@goldwind.com



GoldBlock L800

GoldBlock L800

Model	GoldBlock L800Pro GoldBlock L800ProQ	GoldBlock L800ProZ
PCS inverter	Embedded String PCS inverter 2pcs 1pcs	External inverter
Rated output power [kW]	410 205(AC)	209 to 418(DC)
Rated AC voltage [VAC]	690	N/A
AC voltage range [VAC]	621 to 759	N/A
Rated DC voltage [VDC]	1331.2	561.6 to 1331.2 (4 to 8 battery modules per rack adjustable)
DC voltage range [VDC]	1123.2 to 1497.6	N*140.4 N*187.2 (N=4 to 8)
Rated duration of discharge [h]	2 4	2/4
Cell installed DC energy [kWh]	836	418 to 836 (4 to 8 battery modules per rack adjustable)
Battery type	LFP (LiFePO ₄)	LFP (LiFePO ₄)
Battery capacity [Ah]	314	314
Cooling	Liquid cooling	Liquid cooling
Noise [dB]	≤75	≤75
Explosion prevention	Gas detection & alarm+fail-safe active & passive ventilation system	Gas detection & alarm+fail-safe active & passive ventilation system
Fire suppression	Optional water spray & Aerosol	Optional water spray & Aerosol
Protection level [IP]	IP67 (battery pack) IP55 (cabinet)	IP67 (battery pack) IP55 (cabinet)
Operation temperature	-30°C~55°C (derating above 45°C or below -15°C)	-30°C~55°C (derating above 45°C or below -15°C)
Operation humidity	5~100% No condensation	5~100% No condensation
Altitude [m]	Maximum 3000 (>2000 derating)	Maximum 3000 (>2000 derating)
Communication port	RS485 / Ethernet / CAN	RS485 / Ethernet / CAN
Communication protocol	MODBUS-RTU / MODBUS-TCP / CAN / EtherCat	MODBUS-RTU / MODBUS-TCP / CAN / EtherCat
Dimensions [WxDxH mm]	2350x1600x2430	2350x1600x2430
Weight [kg]	7650	7250
Code & Compatibility	UL9540A, UL1973, UN3480, UL9540,NFPA855 IEC62619, IEC63056,IEC61000, EC62477	UL9540A, UL1973, UN3480, UL9540,NFPA855 IEC62619, IEC63056,IEC61000, EC62477

Reserves the right to make changes to the products and information contained in this document without notice.